



The Global Evaluation Initiative Progress Report

January–June

2025

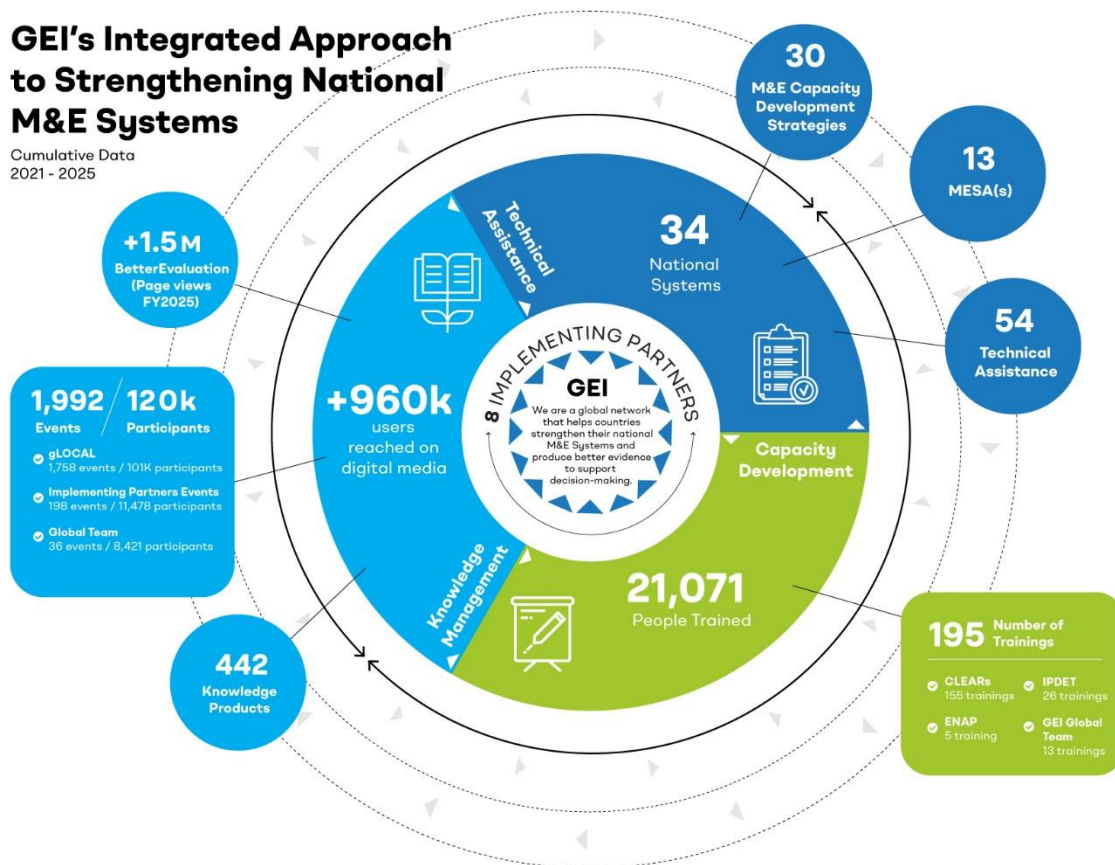
TABLE OF CONTENTS

GEI Cumulative Results (2021–2025)	3
Executive Summary	4
GEI Progress Report—January to June 2025	5
1. Country Advisory and Support Services	6
2. Training and Professional Development	8
3. Knowledge and Communications	9
4. Crosscutting Areas: Gender, Youth, Climate, and Fragility	10
5. Financial Highlights and Grant Management.....	11
Annex 1: Implementing Partner Highlights (January to June 2025)	13

GEI Cumulative Results (2021–2025)

The infographic below highlights the Global Initiative’s (GEI) impact from 2021 to 2025, showcasing achievements in capacity development, technical assistance, and knowledge management. GEI has strengthened monitoring and evaluation (M&E) systems in 34 countries, built capacity for over 20,700 people through 195 training sessions, and engaged 1.3 million users online. Having delivered 59 technical assistance programs, 33 capacity development strategies, 13 Monitoring and Evaluation Systems Analyses (MESA), and 442 knowledge products, GEI continues to improve the M&E field across the developing world.

Figure 1. Cumulative Results of the GEI Network



Executive Summary

In the first half of 2025, GEI significantly expanded its country advisory and support services, reinforcing national evaluation systems and fostering evidence-informed decision-making. Through a combination of diagnostics, strategic partnerships, capacity development, and knowledge sharing, GEI supported country-led reforms and strengthened M&E systems in its 26 core countries.

In the area of country advisory and support services, activities supported country-led reforms through M&E diagnostics and systems design, strategic partnerships, country-led evaluations and evidence syntheses. In Nigeria, a unified diagnostic framework was co-created with Centre for Learning on Evaluation and Results for Anglophone Africa (CLEAR-AA) to guide national evaluation practices. The Centre for Learning on Evaluation and Results for South Asia (CLEAR-SA) supported Tamil Nadu in conducting a comprehensive assessment of its M&E system, identifying institutional gaps and informing future capacity-building. The Centre for Learning on Evaluation and Results for Latin America and the Caribbean (CLEAR-LAC) provided technical assistance to Guatemala in producing a strategic diagnostic report to reform regulatory and methodological frameworks. Colombia developed and began implementing a National Evaluation Plan to align evaluation with policy and development priorities.

GEI's efforts in West and Southern Africa include gender and inclusion analyses that informed the UN World Food Programme's (WFP) anticipatory action programs, improving targeting and inclusivity. Evidence synthesis efforts included a multi-year analysis of WFP's resilience programming, which influenced adjustments in donor-supported initiatives by highlighting effective gender-sensitive and adaptive strategies. Strategic partnerships were formalized to institutionalize evaluation. In the Dominican Republic and Colombia, national M&E plans were supported through structured collaborations with government bodies. Madagascar developed a joint roadmap to embed evaluation in public administration, while Benin updated its national roadmap and launched a municipal-level initiative to promote evidence-based decision-making.

Capacity development remained a core area of GEI activities, with 660 individuals trained—more than half were government officials. Course satisfaction rates surpassed 90 percent,¹ reflecting the relevance and applicability of GEI's capacity-building methods. Highlights include the M&E Academy for World Bank project implementers in Tanzania, Zimbabwe, and Malawi; artificial intelligence (AI)-focused training for parliamentarians in Côte d'Ivoire; and multi-cycle workshops in Brazil. Additional programs strengthened nutrition governance in West Africa, data governance in India, and internal capacity within the Centre for Learning on Evaluation and Results for Francophone Africa (CLEAR-FA). Experiential learning was advanced through GEI's Hands-On Learning program, embedding interns in national evaluation processes in Nigeria, Uganda, Mexico, Mozambique, and Pakistan.

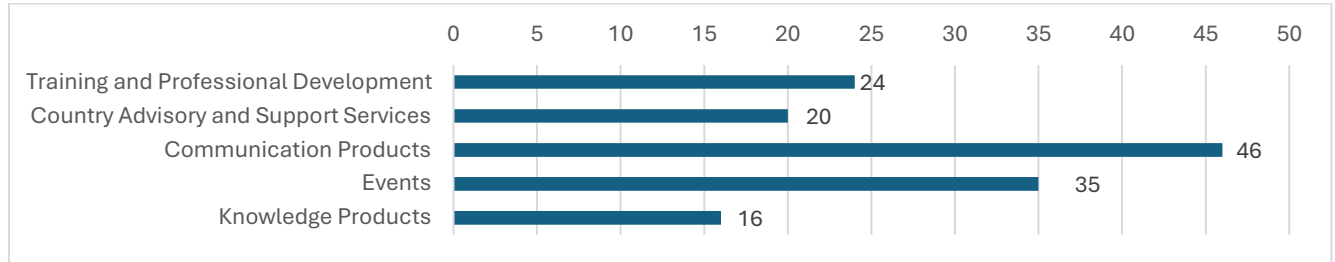
On the knowledge front, the GEI Network produced 46 communication products, 16 in-depth knowledge resources, and organized 35 knowledge exchange events. Key publications explored equity in evaluation, alumni impact, and national evaluation capacity, while flagship events such as the African Evaluation Association's (AfrEA) 25th anniversary and Glocal Evaluation Week mobilized over 16,000 participants across 73 countries. Strategic communications and storytelling further expanded GEI's reach, with 42 products spotlighting field-level impact and thematic campaigns. Digital engagement surged, with a 33.3 percent increase in website traffic and strong growth on LinkedIn, though declining session times and rising email unsubscribes signaled the need for more targeted content.

¹ As reported on GEI&US and in ISRs for select trainings

GEI Progress Report—January to June 2025

Between January and June 2025, the GEI Network delivered 141 activities across 26 countries with the goal of strengthening M&E systems, building capacity, and generating and sharing knowledge. Figure 2 summarizes the number of activities conducted by the GEI Network, including activities implemented by the Global Team.

Figure 2. GEI Network activity types



Note: Figure 2 includes activities carried out by the Global Team in addition to Implementing Partners

Figure 3 illustrates the breakdown of activities conducted by implementing partners along the three main areas of the GEI approach—country services, training and professional development, and knowledge and communication—while Figure 4 shows the change in the number of activities delivered over the past several six-month reporting periods.

Figure 3. Summary of activities by implementing partners

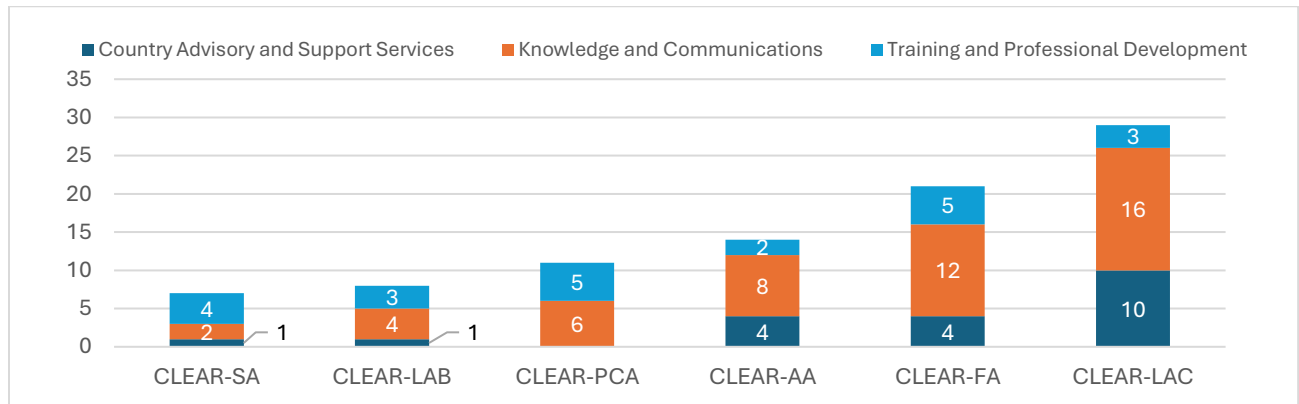
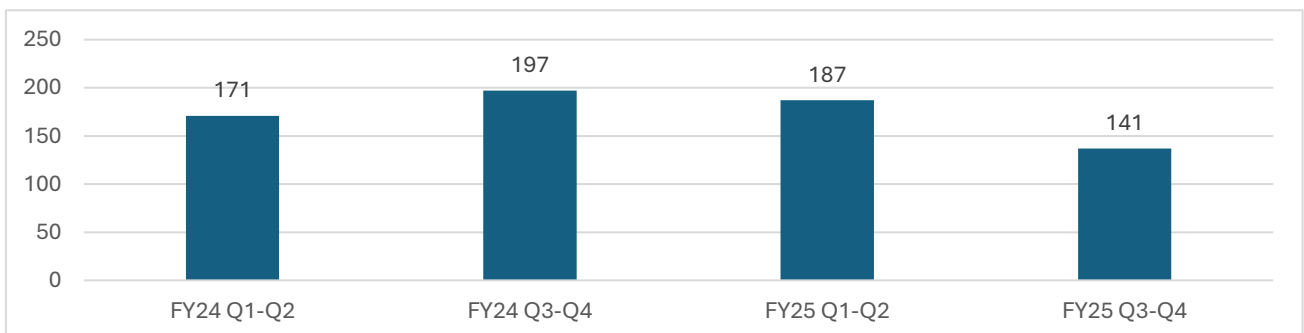


Figure 4. Number of activities delivered over past 4 reporting periods



1. Country Advisory and Support Services

Advisory and support activities were characterized by a strong emphasis on collaborative development of M&E systems, policies, and tools with government and national partners. The work spans Africa, Latin America and the Caribbean, South Asia, and Small Island States, focusing on embedding country-owned, context-responsive M&E systems that inform decision-making and strengthen governance.

M&E Framework and System Design: This work includes the creation of tailored M&E frameworks for multi-country or sectoral initiatives. In Nigeria, the co-creation of the Federal MESA and Issues Note resulted in a unified diagnostic framework that is now actively guiding evaluation practices at both federal and state levels. This process strengthened collaboration among government agencies and evaluation professionals, leading to more coherent and strategic planning for national M&E efforts.

In Tamil Nadu, CLEAR-SA conducted a comprehensive assessment of the state’s M&E system in collaboration with the Department of Planning and Development, the Department of Evaluation and Applied Research (DEAR), the Directorate of Economics and Statistics (DES), and the State Planning Commission (SPC). The assessment focused on defining institutional roles, minimizing overlap, and enabling coordination between DEAR, DES, and SPC. It aimed to build capacity of DEAR and DES to commission evaluations, enhance methodological rigor, and lead cross-department collaboration in survey design and analytics. It also sought to enhance evidence uptake by creating dissemination guidelines and feedback mechanisms; and improve data governance by reviving the Data Analytics Unit and building staff capacity for data use.

In Guatemala, CLEAR-LAC assessed the regulatory and methodological frameworks governing M&E practices across government institutions. This work builds on findings from an earlier National Evaluation Capacity Index (INCE) diagnostic, which identified critical gaps in regulation, institutional processes, capacity, and resource allocation—such as fragmentation in regulatory instruments, duplication of methodologies, and limited institutional capacities to implement M&E consistently across government. It also identified opportunities to unify guidelines under the Secretariat for Planning and Programming of the Presidency’s (SEGEPLAN) leadership and strengthen coordination mechanisms within the government.

In Colombia, CLEAR-LAC supported national authorities in developing and implementing a National Evaluation Plan. The plan provides a roadmap for integrating evaluation into public policy and program management, addressing three key bottlenecks: (i) the partial use and dissemination of evaluations; (ii) limited coverage of evaluation methodologies from the lead entity; and (iii) capacity deficits within counterparts and technical directorates of the lead entity. It also supports the alignment of evaluation activities with national development priorities, promoting coherence and accountability across sectors.

Country- and Region-Led Evaluations: Across regions, GEI provided targeted support to empower governments to lead high-impact program evaluations. In Cabo Verde, the evaluation of the Strategic Plan for Sustainable Development (PEDS I) stands out as a comprehensive country-led initiative. Conducted in collaboration with CLEAR-LAB, the evaluation assessed the implementation and impact of key national programs. As a result, the government launched an online M&E platform that now serves as a centralized tool for tracking progress and managing national development efforts. This initiative was supported by the offices of the Prime Minister and the Minister of Finance.

In West and Southern Africa, the Gender, Protection, and Inclusion Analysis conducted for WFP directly influenced the design of anticipatory action programs in five countries. Regional and country-specific reports enabled WFP to improve the targeting of its interventions and enhance the inclusivity and effectiveness of humanitarian responses.

Evidence Synthesis and Policy Linkages: Synthesizing evidence and linking it to policy plays a foundational

role in ensuring that evaluation efforts translate into tangible improvements for humanitarian and development planning. CLEAR-AA supported WFP in conducting an analysis of its investment in community resilience programs between 2017 and 2024. This report provided a comprehensive overview of what worked, what didn't, and why across various thematic areas including climate change and gender. The analysis highlighted successful approaches to integrating gender-sensitive strategies into resilience programming, as well as the importance of adaptive planning in the face of climate-related shocks. Findings have influenced programmatic adjustments within WFP and other donor-supported initiatives, particularly in how they incorporate community feedback, target vulnerable populations, and measure long-term impact.

Strategic Partnerships and Roadmaps: Formal collaborations have been established with national M&E institutions. In the Dominican Republic, CLEAR-LAC established a formal partnership to support the Ministry of Economy, Planning, and Development (MEPyD) to develop a national M&E plan and play a pivotal advisory role. The plan provides a structured approach to enhancing institutional capabilities, aligning evaluation practices with national development priorities.

In Colombia, CLEAR-LAC formalized a strategic partnership with the national M&E government body—the Departamento Nacional de Planeación (DNP). This partnership defines collaborative processes to identify priority partners, align objectives between government departments, and assign roles and responsibilities. This formalization marks a shift from ad hoc collaboration to a more institutionalized and strategic engagement.

In Madagascar, CLEAR-FA facilitated a dialogue with the Ministry of Economy and Finance and the Programme de Réforme pour l'Efficacité de l'Administration (PREA), to co-develop a joint roadmap for 2025. The roadmap outlines actions to embed evaluation practices within public administration, including capacity building for national M&E focal points, study visits to promote cross-country learning, and developing a national evaluation guide. Now Madagascar has a clear framework that clarifies roles and responsibilities and sets a strategic direction for integrating evaluation into policy and program cycles. The participatory nature of the roadmap's development has fostered ownership among national actors and positioned evaluation as a core component of administrative reform and public sector effectiveness.

In Benin, CLEAR-FA supported institutional development through strategic planning and local engagement. At the national level, CLEAR-FA assisted the Government of Benin in updating the joint roadmap for institutionalizing evaluation with the Directorate General for Evaluation and the Observatory of Social Change (DGEOCS) under the Ministry of Development and Coordination of Government Action. The roadmap outlines strategic actions, including capacity building for national actors, revision of institutional roles and responsibilities, and support for organizing the Beninese Evaluation Day²s. At the municipal level, CLEAR-FA supported the pilot phase of the initiative *Le Baromètre des communes* in the municipalities of Glazoué and Parakou, which includes designing an integrated digital M&E system to better track local actions, providing technical training, developing advocacy capacity, and deploying volunteers to strengthen the use of evidence-based data.

² "Benin Evaluation Days" (Journées Béninoises de l'Évaluation) are a series of conferences held in Cotonou, Benin, focused on public policy evaluation

2. Training and Professional Development

M&E capacity building for public sector and civil society stakeholders was a major focus during the third and fourth quarters of FY25. Twenty-four targeted training and internship programs cumulatively trained at least 704 individuals, with government officials accounting for the majority of participants.

Skills Development and Capacity Building: training activities focused on enhancing practical and technical M&E skills, including data analytics, impact evaluation, policy analysis, and evidence-based decision-making. National and regional training highlights include:

- M&E Academy for World Bank project implementing units (PIU): GEI launched a three-day M&E Academy to build the capacity of PIUs. Four training sessions were held in May: two in Tanzania (Dar es Salaam and Dodoma), one in Zimbabwe (Lusaka), and one in Malawi (Lilongwe). Overall, 156 participants received the training. Developed by GEI with support from the (OPCS³), the training academy was delivered in collaboration with the Development Effectiveness Unit of the Bank's Africa East Vice Presidency, the World Bank Department for Outcomes, World Bank County Management Units, and CLEAR-AA. The curriculum was tailored to the needs of the M&E specialists and project coordinators who report on results of country programs.
- GEI Evaluation Competency Framework: A streamlined, adaptable model that clarifies the knowledge, skills, and behaviors required across six evaluation roles and five domains—professional, technical, managerial, interpersonal, and contextual—to support effective, ethical, and inclusive evaluation practice. Developed through an inductive mapping of seven leading evaluation competency frameworks, the GEI framework adopts a three-tier structure comprising dimensions, competency areas, and individual competencies, with the third tier tailored to organizational requirements and areas of specialization. Intended uses include education and training (e.g., curricula and assessment), professional development, hiring and contracting (e.g., terms of reference and selection), organizational alignment, and strengthening evaluation systems (including use with MESA). Next steps include integrating the framework into GEI's network-wide training strategy and offerings and finalizing the AI-related competencies drafted in the reporting period.
- Côte d'Ivoire: 59 parliamentarians received training on using AI to evaluate youth-centered policies, resulting in a draft roadmap for integrating AI into legislative processes.
- Brazil: 34 public officials completed the first cycle of workshops on theory of change and rapid evaluation, and 16 of them attended the second cycle of workshops on the topic of impact evaluation.
- West Africa: CLEAR-FA trained 33 MEAL and civil society actors from 14 member countries in West Africa in support of the Scale Up Nutrition movement. Training covered M&E concepts applied to multi-sectoral governance of nutrition.
- India: CLEAR-SA trained more than 60 government staff in questionnaire piloting, data governance, and policy decision-making.
- Organizational Development: CLEAR-FA organized an internal training program to improve the capacity of its team members in discourse analysis and argumentation to enhance their ability to present evaluation results in an impactful manner.

Hands-On Learning and Mentorships: Experiential learning through internships and on-the-job training continues to be an integral part of GEI's work program. For example, GEI's Hands on Learning program for 2024–2025 engaged an emerging evaluator in developing Nigeria MESA and reviewing Uganda's M&E policy, while an intern was embedded in Mexico's CONEVAL⁴. In Mozambique, GEI's intern worked closely for six months with a mentor from CLEAR-LAB in Brazil. In Pakistan, mentorship for civil servants led to the production of four evidence-based policy reports for ongoing institutional use.

³ OPCS=Operations, Policy and Country Services department of the World Bank.

⁴ Consejo Nacional de Evaluacion. Government of Mexico.



Additionally, under the Feminist Innovation in Monitoring and Evaluation (FIME) program, GEI awarded six fellowships to young and emerging evaluators from a competitive pool of 283 applicants, supporting research and innovation in gender transformative approaches to evaluation. The awardees are from Bangladesh, India, Ecuador, Tanzania, and Tajikistan.

3. Knowledge and Communications

In the first half of 2025, the GEI Network delivered a total of 90 knowledge outputs—including publications, events, strategic communication, and storytelling that amplified GEI’s reach across global platforms.

Knowledge Products and Publications: Fifteen knowledge products were developed, offering deep dives into emerging evaluation themes and country experiences. Highlights include the release of the *Malawi COVID-19 Urban Cash Intervention* evaluation report, *Evaluation as a mechanism to foster an equitable society in the Global South* and *Transforming Tanzania’s Monitoring and Evaluation System for Lasting Change*. The *Mongolia INCE report* also made a significant contribution to national evaluation capacity narratives.

Events, Webinars, and Knowledge Exchange: GEI and its partners convened 31 events—ranging from high-level conferences and thematic webinars to youth-oriented career fairs. The *United Nations Career Fair* in Senegal engaged 472 participants, while the *Evaluation for a Better Future* launch event gathered 100 stakeholders to reflect on evaluation’s role in addressing inequity and political instability. AfrEA’s 25th anniversary conference in Addis Ababa and the FIFE⁵ forum in Côte d'Ivoire provided important spaces for regional learning. Topical webinars explored gender mainstreaming, urbanization, climate change, and AI in evaluation, with strong participation across the board.

Glocal Evaluation Week 2025: Glocal confirmed its role as a cornerstone of GEI’s learning ecosystem. Under the theme *Evaluation for a Better Future: Environmental Sustainability, Inclusion, and Peace*, the event mobilized over 16,000 participants across 372 sessions in 73 countries. Discussions spanned climate justice, AI, gender equality, urban resilience, and the institutionalization of national evaluation systems. Standout contributions included the launch of the Africa regional Glocal chapter by CLEAR-AA and webinars by CLEAR-FA and CLEAR-PCA exploring language inclusion, mixed methods, and equity-centered approaches.

Strategic Communications and Storytelling: GEI delivered 42 communication products spotlighting leadership transitions, programmatic milestones, and field-level impact stories from Tanzania, Uganda, and Jamaica. Thematic campaigns—for example, the International Women’s Day interview series—highlighted how participatory approaches to evaluation can contribute to progress in gender equality and human rights. From an outreach perspective, digital analytics revealed rising visibility and a shift in engagement patterns. Compared with the same period last year (January–June 2024), website traffic increased by 33.3 percent, LinkedIn drove a strong audience growth by 50.9 percent, and email subscribers grew by 9.2 percent. Although website engagement time dropped by 35.6 percent, overall digital performance within this period remained well above industry benchmarks.

⁵ *Forum International Francophone de l’Evaluation (FIFE 2025)*

4. Crosscutting Areas: Gender, Youth, Climate, and Fragility

Issues of gender, youth, climate, and fragility were embedded in more than 50 activities conducted during the reporting period. The following are key highlights:

Gender

Training workshops and diagnostics—such as the Nigeria Federal MESA and gender policy workshops in Pakistan—have built national capacity to integrate gender considerations into M&E systems. Targeted technical assistance, such as the development of gender-sensitive M&E frameworks for major initiatives like the Mastercard Foundation’s CAPSI⁶ project, have directly strengthened evaluation practices. GEI has facilitated communities of practice, fostered partnerships (notably with the Ford Foundation and regional evaluation associations), and contributed to global knowledge through peer-reviewed publications and research on gender equity. For instance, peer-reviewed publications *Evaluation in Service of Equity? Volume 2* and *Voices from the Global South*—both led by CLEAR-AA and supported by the Ford Foundation—synthesize African evaluation experiences to promote inclusion and equity.

Climate

GEI, the CLEAR centers, and Climate Investment Fund (CIF) have worked collaboratively to complete and disseminate five climate observer-led evaluation studies in June 2025. These evaluations were produced in partnership with evaluation mentors from the CLEAR centers and leading climate specialists and cover critical topics such as just transition in renewable energy, Indigenous Peoples’ grant mechanisms, stakeholder engagement in energy transitions, women’s access to climate finance, and private sector involvement in climate funds.

- Centro Brasil no Clima: Evaluation of just transition in the renewable energy sector in Brazil
- Centro para la autonomía y desarrollo de los Pueblos Indígenas (CADPI): Comparative analysis of the Dedicated Grant Mechanism for Indigenous Peoples and Local Communities (DGM) with the Pawanka Fund
- Climate Action Network Southeast Asia (CANSEA): Evaluation of stakeholder engagement within the Just Energy Transition Partnership (JET-P) in Indonesia
- JVE⁷ Senegal: Assessing women’s access to climate finance in Senegal and Burkina Faso
- Stakeholder Advisory Network on Climate Finance (SAN): Conditions for optimal engagement of private sector stakeholders in climate funds

These completed evaluations will serve as valuable resources for informing future climate policy, enhancing stakeholder engagement, and strengthening accountability within climate finance mechanisms. Their findings and recommendations will help governments, Multilateral Development Banks (MDBs), and climate observers to improve program design, ensure greater inclusivity, and support effective implementation of climate initiatives in line with national and global priorities

Youth

In the first part of 2025, the GEI Network provided capacity-building programs for young professionals, including the GEI Internship Program and specialized training sessions in India. The Network also supported youth-led research initiatives and the integration of youth perspectives in national frameworks, such as the CAPSI Youth Research Initiative. The FIME Small Awards program supported six emerging evaluators with grants to generate gender-transformative evaluation methodologies.

⁶ Centre on African Philanthropy and Social Investment

⁷ Jeunes Volontaires pour l’Environnement

Fragility

GEI facilitated dialogue and knowledge sharing through events and communities of practice, enabling practitioners to exchange strategies for evaluating in complex environments. These efforts have contributed to more robust, inclusive, and context-sensitive evaluation systems in fragile environments.

5. Financial Highlights and Grant Management

Grants to implementing partners were restructured to extend project closure to June 30, 2026. The only exception is the CLEAR-LAC project which has been extended only to December 31, 2025. A second restructuring for the CLEAR-LAC project will be processed in the second quarter of FY26 to further extend its duration. The actual closing date will be established in collaboration with the World Bank Latin America and the Caribbean Vice Presidency.

Additional resources were allocated to IPDET, CLEAR-AA, CLEAR-LAB, and CLEAR-SA. Other implementing partners did not require additional resources to carry out their respective work programs through June 2026.

Table 1. Grants to implementing partners (RETF)

Grantee	FY22	FY23	FY24	FY25	FY26
CLEAR AA	650,000	650,000	650,000	647,000	
CLEAR FA		875,000		865,000	
CLEAR LAB	736,000	736,000	650,000	726,000	
CLEAR LAC				500,000	50,000
CLEAR PCA		750,000			
CLEAR SA	852,516			447,484	
ENAP	250,000				260,000
IPDET	1,460,000		687,000	620,000	505,000
TOTAL per year	3,948,516	3,011,000	1,987,000	3,805,484	815,000
Cumulative disbursed	3,948,516	6,959,516	8,946,516	12,752,000	13,567,000

Table 2 illustrates the schedule of Implementation Status and Results reports (ISR) produced to monitor and support the implementation of projects financed by GEI. Each ISR report includes a virtual or in-person supervision mission and assesses performance from the standpoint of results achieved, procurement, financial management aspects, as well as compliance with environmental and social standards.

Table 2. ISR Ratings and mission dates for RETF grants

Implementing partner	Overall rating	ISR date	ISR document Link
CLEAR-SA	Satisfactory	7 th April 2025	Click here SA
CLEAR-PCA	Satisfactory	7 th May 2025	Click here PCA
CLEAR-FA	Moderately Satisfactory	21 st Jan 2025	Click here FA
CLEAR-AA	Satisfactory	27 th Mar 2025	Click here AA
CLEAR-LAB	Highly Satisfactory	13 th Feb 2025	Click here LAB
CLEAR-LAC	Satisfactory	17 th Jan 2025	Click here LAC
IPDET	Satisfactory	13 th Mar 2025	Click here IPDET
ENAP	Satisfactory	7 th Apr 2025	Click here ENAP

Table 3. Contributions to GEI MDTF by donor and FY (in US\$)

Bilateral Agencies						
	FY21	FY22	FY23	FY24	FY25	TOTAL
Sweden	2,417,503	-	908,926	-	-	3,326,428
Netherlands	1,222,500	281,725	345,355	269,425	259,800	2,378,806
Germany	1,208,320	1,465,230	1,052,200	1,079,800	742,250	5,545,800
Switzerland	-	403,735	265,674	281,436	285,258	1,236,106
Finland	305,925	-	-	-	187,092	493,017
Portugal	-	11,292	-	-	20,998	32,280
Denmark	263,223	-	228,741	218,891	-	710,856
France	-	-	-	-	110,215	110,215
Canada	190,506	-	361,519	370,233	353,657	1,275,916
Total Bilateral	5,607,977	2,161,982	3,162,415	2,219,785	1,957,260	15,109,425
Multilateral and UN Agencies						
IDB	500,000	500,000	500,000	500,000	50,000	2,050,000
UNDP	200,000	150,000	200,000	150,000	100,000	800,000
UNICEF	-	-	-	10,000		10,000
IFAD	50,000	300,000	40,000	40,000	50,000	480,000
Total MDB & UN Agencies	750,000	950,000	740,000	700,000	200,000	3,353,000
World Bank Group (IEG)						
Total WBG Contributions	3,363,000	3,428,000	3,156,000	2,892,000	3,771,900	16,610,900

Annex 1: Implementing Partner Highlights (January to June 2025)

CLEAR-AA finalized and submitted two peer-reviewed volumes on evaluation and equity, offering strategies to address inequality. The center also co-developed Nigeria’s Federal Monitoring and Evaluation Systems Analysis (MESA) and Issues Note—key inputs for national M&E reforms—with validation scheduled for September 22–26, 2025, in Abuja. A capacity strengthening strategy will follow. CLEAR-AA conducted gender, protection, and inclusion analyses for WFP, producing reports for five African nations. Training for 25 Tanzanian officials received 91 percent positive feedback. Additional activities included Glocal Evaluation Week events and technical support for innovative M&E frameworks such as CAPSI-Mastercard Foundation and WFP resilience programming.

CLEAR-FA developed and validated a *Guide for Evidence Use in Budget Review* for parliamentarians and published an M&E manual for Francophone Africa as an open-access learning resource. Training for civil servants and civil society representatives in Congo’s reached 31 participants with a 95 percent satisfaction rate, while 59 Ivorian parliamentarians attended an AI-focused policy evaluation workshop. Regional workshops supported the Scaling Up Nutrition movement, engaging 33 participants from 14 countries. Forty Glocal Evaluation Week events promoted peer learning on gender, climate, and women in evaluation. The center also supported emerging evaluators through mentorship and research and presented efforts to institutionalize evaluation in Côte d’Ivoire and Senegal during roundtables at the Fifth *Forum International Francophone de l’Evaluation l’Evaluation* (FIFE 2025).

CLEAR-LAB provided technical support for the evaluation of Cabo Verde’s Strategic Plan for Sustainable Development and delivered customized M&E training for 34 officials in São Paulo and Brazil’s Federal Senate. In partnership with the Court of Auditors of Espírito Santo, the center developed a monitoring system for 78 municipalities, organized a seminar for 300 participants, and delivered an M&E course for 30 municipal government representatives. CLEAR-LAB implemented the GEI internship program in Brazil and Mozambique and led climate evaluation training for Climate Investment Funds observers. In May 2025, the center celebrated its tenth anniversary with a seminar attended by 180 stakeholders, launching a *Guide on Monitoring and Evaluation of Public Policies*, a *Diagnosis of Brazil’s Evaluation Systems*, and ten thematic publications. The team organized 36 Glocal Evaluation Week events, three of which were held in Portuguese. These resources consolidate more than a decade of practical experience and promote evidence-based decision-making in Brazil and Lusophone Africa.

CLEAR-LAC consolidated partnerships with the Dominican Republic and Colombia, producing national M&E system plans for each. The team contributed to an INCE workshop in Ecuador and assessed Guatemala’s M&E regulatory framework, delivering a proposal in July 2025. Technical assistance in Ecuador enhanced the Undersecretary of Evaluation’s human resources profile, completed in August 2025. CLEAR-LAC also trained 71 professionals, delivered courses in Ecuador, the Dominican Republic, and Guatemala, and hosted 138 Glocal Evaluation Week events. The center also published two knowledge products, organized eight additional events, and fostered regional knowledge sharing through networks such as ReDeCA.

CLEAR-PCA solidified long-term institutional partnerships by signing three-year MoUs with the Balochistan Civil Service Academy and the National School of Public Policy and trained around 100 civil servants through a series of capacity-building activities. A flagship 13-week mentorship program engaged 24 young civil servants in evidence-based policy making, resulting in 4 internal institutional reports. The team organized a demand-driven, open-enrollment training under its three-part series on evaluative evidence for gender policy. This second edition focused on equipping researchers and M&E professionals with the skills to design, evaluate, and analyze gender-responsive projects. CLEAR-PCA also convened 16 Glocal Evaluation Week events, advancing dialogue on inclusion, language, and mixed-method evaluation.

CLEAR-SA supported India’s apex M&E body, DMEO, by training 35 and 30 staff, respectively, in questionnaire piloting and data governance. The center conducted a comprehensive capacity assessment for Tamil Nadu’s Department of Planning and Development, providing a strategic roadmap for evaluation across state agencies. Youth-focused M&E training reached 42 individuals through guest lectures at the Center of Policy Research and Governance and IIIT-Delhi. CLEAR-SA also participated in high-level panels on technology and data for the social sector, expanding outreach and leadership in public sector M&E.

Annex 2: Planned Activities in Core GEI Countries (FY26-27)

Implementing Partner	Country	Planned Activities FY26-27
CLEAR-AA	Eswatini	Validate the national M&E policy, anticipated for late FY25 or early FY26. Develop an implementation plan to ensure the policy’s objectives are met. Co-create standardized evaluation guidelines for government departments to complement the policy.
	Lesotho	On-demand support.
	Malawi	On-demand support.
	Namibia	On-demand support.
	Tanzania	Enhance tools and frameworks for collecting and using gender-disaggregated data to inform targeted interventions for the Five-Year Development Plan and Voluntary National Review. Continued accompaniment support to the Prime Minister’s Office to manage the country-led evaluation of Agricultural Sector Development Programme (ASDP) II. Provide technical assistance in developing Tanzania’s integrated M&E platform. Support the creation of an accredited short course for officials on M&E. Assist in developing a national policy and implementation guidelines. Launch Phase 2 of country M&E system support, incorporating emerging tools.
	Uganda	Develop an implementation plan for the revised National M&E Policy; Support government to strengthen gender-disaggregated data collection for targeted interventions in the Five-Year Development Plan and VNR reporting. Collaborate on a mapping exercise of “who, what and how” of evaluation training in the country, and contribute to the design of a comprehensive capacity building course.
	Nigeria	Assess current M&E skills through a competency evaluation to identify gaps and guide curriculum development. Develop a targeted M&E course in partnership with a university. Organize a Nigeria Monitoring, Evaluation, Results and Learning week with partners. Create a financing strategy for NES sustainability.
CLEAR-FA	Benin	Enhance evidence utilization and the National Evaluation System inclusiveness by revising the national evaluation guide and the national evaluation policy. Scale up monitoring through technical support for the implementation of the Management Performance Assessment Tool (MPAT) across ministries. Strengthen planning and M&E capacity at three pilot municipalities through the rollout of a digital platform and training, in partnership with Ford Foundation.
	Burkina Faso	Continue technical support for COVID-19 response evaluation (demand-dependent).
	Burundi	On demand support.
	Congo-Brazzaville	Sustain and further develop partnerships to support resource mobilization for M&E capacity development. Implement a capacity-building plan by developing components of the national evaluation system—including a national evaluation policy, guide, and a cadre of evaluators. Implement field visits and knowledge exchange activities to maintain awareness, leadership, and incentives for M&E.
	Cote d'Ivoire	Support the signing and implementation of the draft decree pertaining to the national evaluation fund. Operationalize the National Evaluation Law by

		developing a national evaluation policy, evaluation guide, and a community of practice, in partnership with the Agence Française de Développement (AFD). Build the capacity of evaluation commissioners through the development of an evaluation toolkit, also in partnership with AFD. Support knowledge-sharing activities.
	Madagascar	Develop a national evaluation guide focusing on gender, inclusion and equity as part of the updated capacity-building roadmap, in collaboration with the Ford Foundation. Implement specific on-demand training activities. Provide quality assurance for the implementation of a country-led pilot evaluation. Support knowledge sharing through peer-country visits and participation in international conferences (for example, the National Evaluation Capacities [NEC] Conference) to maintain and develop leadership in the field of M&E.
	Senegal	Build the capacity of emerging evaluators through technical support to CESAG's master's program in public policy evaluation, including mentoring and internship programs and technical support for the students' club of evaluators. Establish a community of practices to develop skills on specific M&E areas of expertise to meet the demand for evaluation professionals in the country, in partnership with the VOPE and AFD.
	Togo	Support the development of emerging evaluators through the implementation of training programs in partnership with universities.
	Regional FA	Finalize and disseminate the <i>African parliamentarians' Guide on the Use of Evidence</i> to strengthen parliamentarians' capacity in budget scrutiny and public policy implementation oversight. Disseminate findings from the assessment of the countries' monitoring and reporting capacity on the <i>African Continental Free Trade Area (AfCFTA) Agreement</i> to support the development of national strategies to strengthen the monitoring systems. Evaluate the African Parliamentarians' Network on Development Evaluation APNODE 2017–2020 Strategic Plan and post-2020 interventions to inform the upcoming reform of the network and develop its new strategic plan.
CLEAR-PCA	Pakistan	Develop M&E system templates and toolkits in collaboration with provincial M&E units to embed sustainable practices, enhance institutional capacity, and drive long-term improvements in M&E across governance systems.
	Uzbekistan	Feedback on Strategic Planning Decree annexes. Support the development of the M&E decree. Implement the capacity-building plan.
CLEAR-SA	Bhutan	Support the legalization of the Planning, Budgeting, Monitoring and Evaluation (PBME) framework submitted to Bhutan's cabinet recently. Explore collaboration with the World Bank Bhutan office is being to enhance national data governance.
	India	Continue as a knowledge partner to national and state governments, supporting M&E and data use. Collaborate with agencies like DMEO, Lal Bahadur Shastri National Academy of Administration, and Karmayogi Bharat, and states including Andhra Pradesh, Odisha, Tamil Nadu, and Punjab.
CLEAR-LAB	Angola	On-demand support.
	Brazil	Support federal and subnational levels in developing legal and regulatory frameworks. for both levels. Develop municipal evaluation systems in the State of Espírito Santo, in partnership with the Court of Auditors of Espírito Santo. Position Brazil as a regional champion, fostering South-South cooperation with Lusophone Africa, consolidating and disseminating practical guides and manuals as global public goods, and organizing national and regional events to strengthen peer learning and knowledge exchange.

	Cabo Verde	Reinforce the NES by embedding M&E mechanisms into governance processes and policy cycles, including revising and implementing the Strategic Plan for Sustainable Development (PEDS II). Scale up training programs for public officials. Identify national champions within key ministries to serve as catalysts for peer learning across Lusophone Africa. Promote joint events with Brazil and Mozambique.
	Mozambique	Support the participatory validation and implementation of the National Evaluation Plan. Publish and operationalize the national M&E manual aligned with CLEAR-LAB's global knowledge products. Deliver decentralized capacity-building programs with partners to extend M&E practices beyond central institutions. Facilitate South-South exchanges with Brazil and Cabo Verde to accelerate institutional learning. Develop and empower champions within government and CSOs to grow a sustainable evaluation culture.
	Regional	Enhance collaboration between CLEAR-LAB and CLEAR-LAC by sharing knowledge products, organizing joint events, and identifying regional champions to drive peer learning. Provide accessible, practical resources through series like <i>Avaliação na Prática</i> , supporting practitioners with free evaluation tools and guides. Expand the Program in Rural M&E (PRiME) courses in partnership with IFAD to offer high-quality, multilingual M&E training in rural development. Offer both online and in-person training focused on M&E fundamentals and hands-on learning.
CLEAR-LAC	Colombia	Support the country in a new INCE measurement. Introduce an <i>M&E of Public Policies</i> course, including technical assistance for more than 10 programs. Support a country-led evaluation (evaluation design).
	Dominican Republic	Support the country in a new INCE measurement. Develop and implement a community of practice. Support the new institutional structure functioning. Provide one specialized course.
	Ecuador	Strengthen the national M&E system with EvalConnect (DEval), supporting the functioning of the new institutional structure. Deliver an analysis of the evaluation human resources framework. Provide one specialized course.
	Guatemala	Provide technical assistance for implementing the new M&E regulatory framework and evaluation agenda. Provide technical assistance for producing M&E guides. Offer one specialized course.
	Chile	Support the country in its first INCE measurement. Introduce an <i>M&E of Public Policies</i> course that includes a childhood perspective, in partnership with UNICEF Chile. From this course, build a community of practice and implement knowledge-sharing activities.
	Regional (Caribbean)	Engage with the Caribbean Development Bank to strengthen the M&E systems of Jamaica, Trinidad & Tobago, Saint Lucia, and Dominica. Develop an M&E system-strengthening plan for each country and provide technical assistance to Trinidad & Tobago. Introduce an <i>M&E of Public Policies</i> course for the region, including technical assistance to programs. Collaborate in organizing the Caribbean Evaluation Conference.
	Regional (Latin America)	Develop and implement a community of practice across nine countries to exchange knowledge on evaluation use, in partnership with DEval and the Office of Evaluation and Oversight of the Inter-American Development Bank (OVE-IDB). Introduce an <i>M&E of Public Policies</i> course with a gender perspective, in partnership with UN Women. Publish a public policy design and design evaluation guide for public officers, in partnership with OVE-IDB.